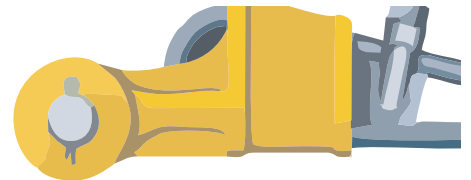


Wire Rope Sockets

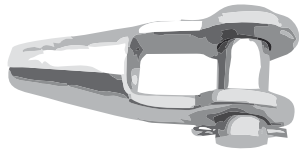
Choosing the right one for the job

Wedge Socket

A wedge socket is used for an application where the wire rope wears quickly. The wedge socket can be removed, the rope trimmed, and the socket attached again. Here's how it works: The end loop of the wire rope is pushed through the socket opening. As the load is gradually increased, the wedge grips the rope tighter.



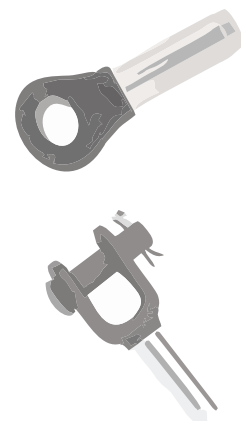
Poured Socket



When you need a high strength, permanent application, use a poured socket. The wire rope is inserted into the narrow end of a cone-shaped cavity and the wires are separated and splayed out inside. Then the cone is filled with either zinc (called a spelter socket) or an epoxy socketing material.

Swage Socket

A swage socket is another option for a permanent termination. Here, the wire is inserted into a swage terminal, and then pressed with high force using a swaging machine. Two different types of terminations, or fittings, can be used: a closed socket has an eye shape at the end of the fitting. An open socket has a basket and two ears with a pin.



**Click to our Online Suppliers Directory and search for
“SOCKETS: SPELTER,” “SOCKETS: SWAGE,” and “SOCKETS: WEDGE.”
You’ll find some of the best suppliers of wire rope sockets in the industry!**